

Fiber Optic Safety

A risk assessment must be completed for each person who is to have access to the Fiber Optics before use. Do not allow the Fiber Optics to be put in a user's mouth under any circumstances.

Ensure the person using the Fiber Optics is under constant supervision, and do not allow the Fiber Optics to be put around a person's neck.

Troubleshooting

Q. The unit doesn't work.

- A1. Is it switched on? If so,
- A2. Are the fiber optic strands connected to the lightsource? If so,
- A3. Has the unit scrolled through its colors? If not,
- A4. Please contact us for further assistance.

Contact Details

For USA please email support@experia-usa.com

For UK and rest of the world email support@experia-innovations.co.uk

Telephone: (800) 882-4045.

Manufactured proudly in the USA!

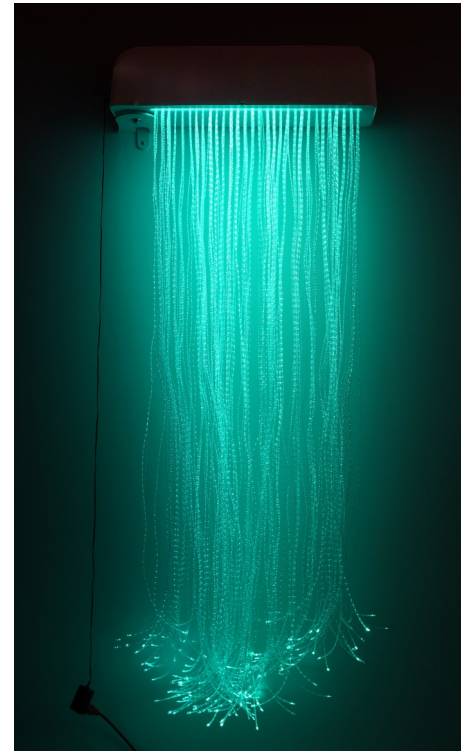
© Copyright 2010 - 2017 Experia All rights reserved. Experia is a registered trademark.



experia **USA**
multisensory for everyone



Calming LED Fiber Optic Cascade



Congratulations on the purchase of your Calming LED Fiber Optic Cascade!

It has been designed specifically for people with special needs and should, if used in accordance with these guidelines, offer years of fun! It comes complete with a Calming Lightsource which offers calming, relaxation and de-escalation opportunities.

Together they offer opportunities to develop numerous skills including color recognition, cause and effect, and many more, as well as calming, relaxation and de-escalation opportunities.

It uses our proprietary Fiber Optic Lightsource, currently one of the brightest LED Lightsources currently available and produces multiple shades of colors in calming mode. The Cascade also includes our safe, 150 strand fiber optic sideglow harness. There is no electricity present in the fiber optic strands—just light—so it is safe to touch and hold.

Please ensure you read and follow these Instructions carefully before installing or operating the unit. Please keep this manual for future reference.



WARNING: CHOKING HAZARD

Small Parts: Not suitable for children under 3 years.



3+ years

Please follow all warnings on the product and within this manual. If upon receipt of this product, the user suspects that the product is defective, and/or requires service or repair due to malfunction or damage to the product, please contact the manufacturer immediately. Please be aware that improper installation and/or use or misuse of this product may result in injury, death, or adverse reactions to its user. Failure to comply with these precautions or with specific warnings elsewhere in this manual violates safety standards of design, manufacture, and intended uses of the product.

Features

- Hundreds of shades of colors
- No electricity present in fiber optics
- Ergonomic design
- Completely silent
- Long life LED technology—no lamp to change...EVER!
- Cool running
- Low voltage transformer supplied
- Durable and easy to use
- 1 Year manufacturers guarantee (collect and return)

Pack contents

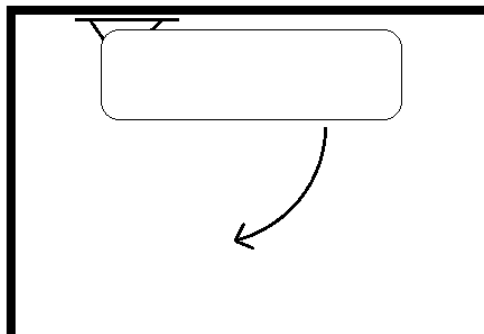
- 1 - Wall bracket (attached)
- 1 - Calming LED fiber Optic Cascade with 6 ft. Fiber optic sideglow
- 1 - Low voltage transformer
- 3 - 100 lb. wall anchors (drywall)

Installation

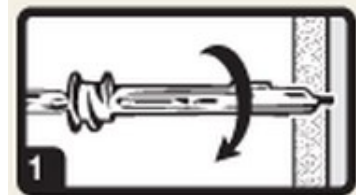
Installation should be done by an experienced competent person only.

The product **MUST** be fixed to a strong, solid wall using the correct fasteners. The fasteners used are dependant on the construction of your wall. The fasteners used should have a minimum rating of 50 lbs. For installation on drywall, we have included three anchors rated at 100 lbs. each. If possible, align at least one of the holes in the bracket with a wall stud (in which case you would substitute an appropriate wood screw in place of the anchor provided). Alternatively, You can install a sheet of plywood (recommended 3/4") to the wall that spans several studs, and then attaching the Cascade to the plywood. Please consult with a qualified maintenance person.

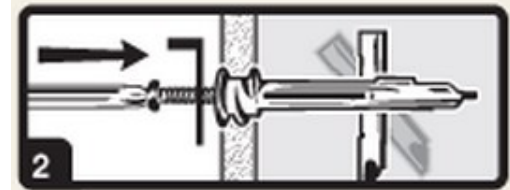
1. Determine the location that you would like to install the Fiber Optic Cascade. It is designed, preferably, to lay against the wall to the right of the bracket (right).
2. Hold the wall marking template against the wall where you wish to mount the bracket (bottom hole at least 76" from floor).
3. Level the marking template, then mark the holes through the paper with a sharp object.



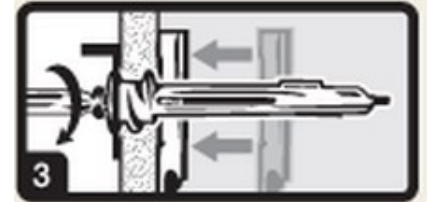
4. Using a #2 Phillips screwdriver and **WITHOUT** the anchor screw installed, press the anchor tip slightly into drywall (1) and, while applying pressure, turn anchor until flush with drywall (2). **Make sure the arrows on head of anchor point up and down.** Do not overtighten. Repeat on each mark.



5. Now, insert the anchor's long screw, which will flip the back side of the anchor (2) vertically. You might need to tap it. Then tighten it to pull it against the drywall (3).



6. Remove the screw and set aside.
7. With a helper, hold the Cascade up to the anchors. Put a flat washer on each anchor screw, then insert through the bracket hole and tighten. There is some play in the mounting holes, so you may need to do a quick visual to make sure the Cascade is level before final tightening.



8. Plug the low voltage transformer into the socket on the back of the white cover, and then into a nearby 110v AC outlet.
9. Your Cascade is now ready to use, and will now illuminate and will scroll through the many colors.

WARNING: *This product is not designed to have anyone hang from or pull the fiber optic strands with any force. Failure to adequately supervise users could result in the unit being pulled from the wall causing serious injury.*

Please note: Only use the transformer supplied. Use of a different transformer may result in damage to the product and void the warranty.

Cleaning and Maintenance

The fiber optic unit should be cleaned at least weekly with a damp soft cloth. A non abrasive cleaning agent or antibacterial solution may be used for stubborn stains. Please check the cleaning agent on an inconspicuous area of the unit to ensure it is appropriate to use. Ensure no liquid enters the base of the unit.

The unit has been designed for use by people with special needs, however this does NOT mean it is impossible to damage. Make sure that no sharp objects are near or on the Softie. Take care when moving the Softie to prevent damage to the Softie or Lightsource.

Soak the fiber optic strands in the solution and clean with a cloth before rinsing and allow this to dry naturally. Do not place the termination (metal end of the optic) in the solution. ***This may need to be cleaned more frequently depending on the level of usage.***

The Fiber Optic Cascade should be untangled and straightened at least once a week to ensure it is at its optimum condition.